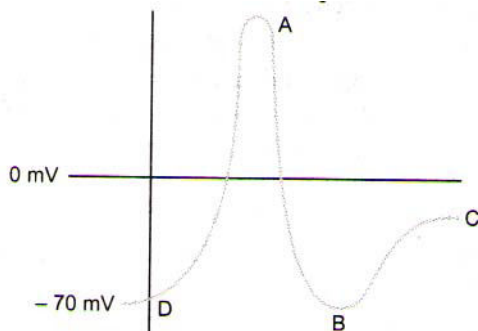


Topic :- Neural Control & Coordination

- The potential difference across the membrane of nerve fibre when it does not show any physiological activity is called resting potential. It is about
a) -60 mV b) -80 mV c) +60 mV d) +90 mV
- Which is the visible coloured portion of the eye?
a) Pupil b) Lens c) Iris d) Ciliary body
- Refer the figure to answer the question.

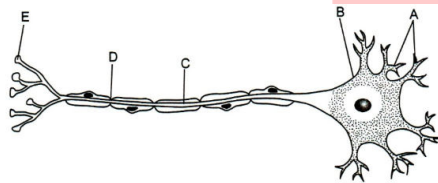


E

- Identify the region where all Na⁺ channels are reactivated but closed and all K⁺ channels are closed.
- D b) C c) B d) A
- The anterior portion of sclera is called
a) Iris b) Cornea c) Ciliary body d) Pupil
 - Arachnoid membrane is
a) Outer meninx b) Neurilemma c) Middle meninx d) Inner meninx
 - Cells of Schwann are associated with
a) Nervous tissue b) Skeletal muscle c) Cardiac muscle d) Connective tissue
 - Reflex action involves
a) Spinal cord b) Cerebellum c) Medulla oblongata d) Optic fibre

8. In humans, tympanic membrane is composed of connective tissues which is covered with
 a) Skin outside and with mucus membrane inside b) Mucus membrane only
 c) Mucus membrane outside and with skin inside d) Skin only
9. At blind spot
 a) Optic nerves leave the eye and retinal blood vessels enter it
 b) Retinal blood vessels leave the eye and optic nerves enter it
 c) There is no involvement of optic nerves at all
 d) There is no involvement of retinal blood vessels at all
10. Wax gland present in the human ear canal is called
 a) Sebaceous gland b) Mucous gland c) Ceruminous gland d) Sweat gland
11. Yellow spot is found in
 a) Muscles b) Nerves c) Kidney d) Eyes
12. Function of ear ossicles in human is
 a) To equalise the pressure on either sides of ear drum
 b) Collects the vibrations in the air which produce sound
 c) To increase the efficiency of transmission of sound waves to the inner ear
 d) All of the above

13. Select the correct option to represent A to E in the given structure of a neuron



- a) A-Dendrites, B-Cell body, C-Axon, D-Node of Ranvier, E-Synaptic knob
 b) A- Axon, B-Myelin sheath, C-Schwann cell, D-Node of Ranvier, E-Axon terminal
 c) A-Dendrites, B-Cell body, C-Schwann cell, D-Node of Ranvier, E-Synaptic knob
 d) A-Axon, B-Cell body, C-Dendrites, D-Node of Ranvier, E-Axon terminal
14. Sclera of human eye is composed of
 a) Blood vessels b) Ganglion cells c) Photoreceptor cells d) Connective tissue
15. The nerve centres which control the body temperature and the urge for eating are controlled by
 a) Hypothalamus b) Pons c) Cerebellum d) Thalamus
16. Involuntary activities of the body are controlled by
 a) Autonomic nervous system b) Somatic nervous system
 c) Both (a) and (b) d) None of the above

