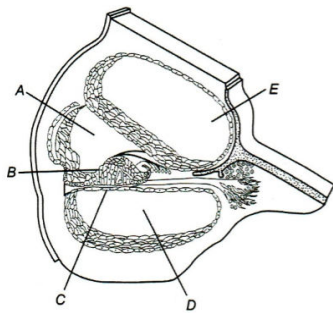


Topic :- Neural Control & Coordination

- Which of the following is correct for the pairs of cervical nerves and number of cervical vertebrae respectively?
a) 8 and 7 b) 16 and 7 c) 7 and 7 d) 7 and 16
- The nerve fibre in its resting stage is
a) More permeable to K^+ b) Semi-permeable to K^+
c) Less permeable to K^+ d) All of these
- Movement of tongue muscle is controlled by
a) Facial nerve b) Trigeminal nerve c) Hypoglossal nerve d) Vagus nerve
- Alimentary canal is supplied by
a) Olfactory b) Optic c) Trigeminal d) Vagus
- The retina of nocturnal birds contain
a) Cones only b) Rods only c) Both (a) and (b) d) None of these
- What is the space between arachnoid and piamater?
a) Supra-arachnoid space b) Sub-arachnoid space
c) Sub-dural space d) Meninges
- Choose the odd pair out in the following.
a) Areolar connective tissue-Collagen b) Epithelium-Keratin
c) Neuron-Melanin d) Muscle fibre-Actin
- Sympathetic nervous system controls
a) Erections of hairs b) Whitening of hairs c) Withdrawl of hairs d) All of the above
- Dendrites are
a) Branched short fibres b) Projections out of the cell body
c) Nissl's granules containing body d) All of the above

10. Sensation of stomach pain is due to
 a) Interoceptors b) Exteroceptors c) Proprioceptors d) Teloceptors
11. ...A... is attached to the tympanic membrane and the ...B... is attached to the oval window of the cochlea
 Choose the correct option for A and B
 a) A-Malleus, B-stapes b) A-Malleus, B-incus c) A-Stapes, B-malleus d) A-Incus, B-stapes
12. In which part of the brain, satiety centres is present?
 a) Cerebellum b) Medulla oblongata c) Cerebral hemisphere d) Hypothalamus
13. Which of the following is correct for lens focusing while seeing distant object?
 a) Tightly stretched suspensory ligament and rounded lens
 b) Contracted ciliary muscles and rounded lens
 c) Relaxed ciliary muscles and tightly stretched suspensory ligament
 d) Contracted ciliary muscles and relaxed suspensory ligaments

14. Below is the diagram of the sectional view of cochlea of human ear. Identify *A* and *E*



PE

Choose the correct option

- a) A-Scala media, B-Organ of Corti, C-Basilar membrane, D-Scala tympani, E-Scala vestibuli
 b) A-Scala vestibuli, B-Organ of Corti, C-Basilar membrane, D-Scala tympani, E-Scala media
 c) A-Scala vestibuli, B-Basilar membrane, C-Organ of Corti, D-Scala tympani, E-Scala media
 d) A-Scala vestibuli, B-Basilar membrane, C-Scala tympani, D-Organ of Corti, E-Scala media
15. The cell body of neuron contains certain granular bodies called
 a) Cell granules b) Neuro cells c) Nissl's granules d) Neurogranules
16. Pinna
 a) Collects the vibrations in the air which produce sound
 b) Are wax secreting glands
 c) Increase the efficiency of transmission of sound waves to the inner ear
 d) All of the above

17. Light sensitive cells of eye are present in
a) Retina b) Cornea c) Iris d) Choroid
18. Which of the following statements are incorrect?
I. The space between cornea and lens is filled with watery fluid
II. Rhodopsin is red protein, hence called visual red
III. The anterior transparent portion of choroid is called cornea
IV. When all cones are stimulated equally, a sensation of no light (dark) is produced
Choose the correct option
a) Only II b) I and III c) All are correct d) All except II
19. In *Hydra*, neural organization is comprises of
a) Network neurons b) CNS and PNS c) CNS d) PNS
20. Schwann cell is found around
a) Axon b) Cyton c) Dendrite d) Dendron

PE